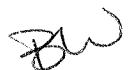
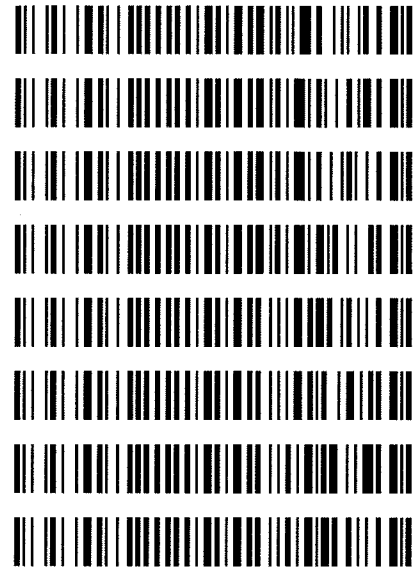




**Worklist: 1597**

<u>LAB CASE</u>	<u>ITEM</u>	<u>TASK ID</u>	<u>DESCRIPTION</u>
C2017-0345	1	78867	AM 3 Urine Carboxy-THC
C2017-0365	2	78868	AM 3 Urine Carboxy-THC
C2017-0366	1	78869	AM 3 Urine Carboxy-THC
C2017-0372	1	78870	AM 3 Urine Carboxy-THC
C2017-0408	1	78871	AM 3 Urine Carboxy-THC
C2017-0410	2	78872	AM 3 Urine Carboxy-THC
C2017-0428	1	78873	AM 3 Urine Carboxy-THC
C2017-0429	1	78874	AM 3 Urine Carboxy-THC



Area Percent Report

Data Path : D:\DATA\2017\3-9-17-17 cTHC\  
Data File : 02301003.D  
Acq On : 09 Mar 2017 14:43  
Operator : Instrument 65198 - Tox  
Sample : brc3 control  
Misc : lot 68430; am 3  
ALS Vial : 23 Sample Multiplier: 1

Integration Parameters: autoint1.e  
Integrator: ChemStation

Method : D:\DATA\2016\852016a ta\psilocyn .D\TOXI-A 10115.M  
Title :

Signal : EIC Ion 371.00 (370.70 to 371.70): 02301003.D\data.ms

peak #	R.T. min	first scan	max scan	last scan	PK TY	peak height	corr. area	corr. % max.	% of total
1	3.896	13	21	29	PV	3205	60103	6.63%	5.807%
2	4.689	148	169	194	BB	51733	906768	100.00%	87.609%
3	4.904	196	209	223	BB	3672	68151	7.52%	6.584%

Sum of corrected areas: 1035022

Signal : EIC Ion 473.00 (472.70 to 473.70): 02301003.D\data.ms

peak #	R.T. min	first scan	max scan	last scan	PK TY	peak height	corr. area	corr. % max.	% of total
1	4.691	145	169	187	BB	24054	433371	100.00%	68.424%
2	4.906	199	209	219	BB	2639	49444	11.41%	7.807%
3	5.172	244	258	276	BB	7232	150543	34.74%	23.769%

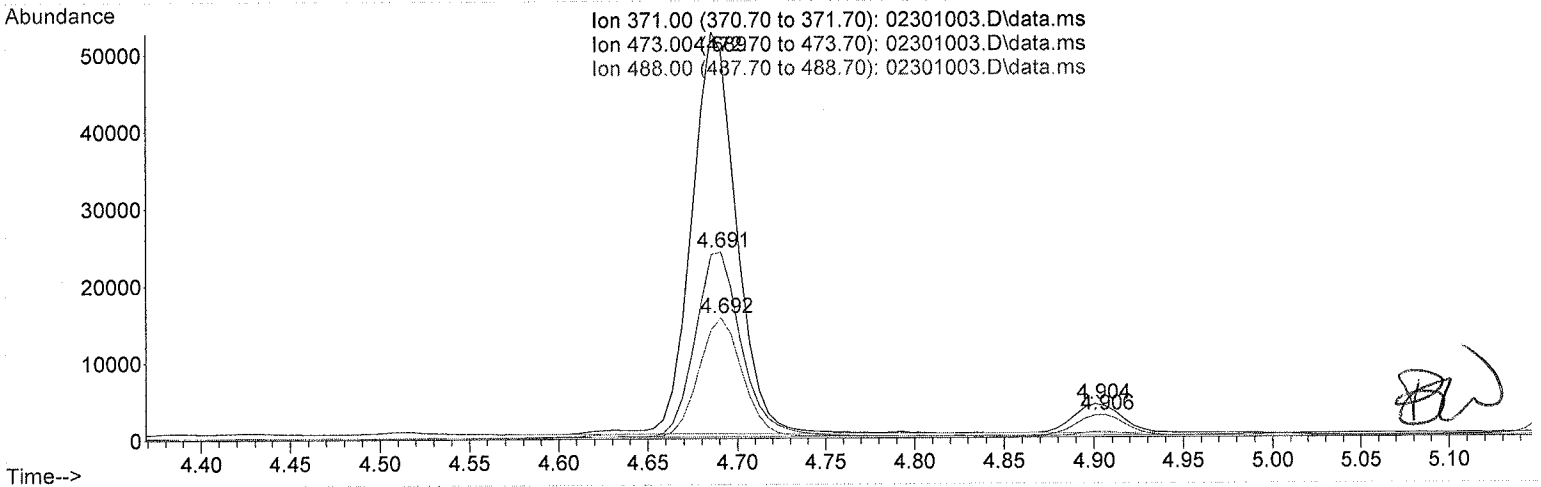
Sum of corrected areas: 633357

Signal : EIC Ion 488.00 (487.70 to 488.70): 02301003.D\data.ms

peak #	R.T. min	first scan	max scan	last scan	PK TY	peak height	corr. area	corr. % max.	% of total
1	4.692	162	169	188	VB	15229	265892	100.00%	100.000%

Sum of corrected areas: 265892

TOXI-A 10115.M Thu Mar 09 14:55:22 2017



Area Percent Report

Data Path : D:\DATA\2017\3-9-17-17 cTHC\  
 Data File : 02201001.D  
 Acq On : 09 Mar 2017 14:25  
 Operator : Instrument 65198 - Tox  
 Sample : negative control  
 Misc : lot 12517; am 3  
 ALS Vial : 22 Sample Multiplier: 1

Integration Parameters: autoint1.e  
 Integrator: ChemStation

Method : D:\DATA\2016\852016a ta\psilocyn .D\TOXI-A 10115.M  
 Title :

Signal : EIC Ion 371.00 (370.70 to 371.70): 02201001.D\data.ms

peak #	R.T. min	first scan	max scan	last scan	PK TY	peak height	corr. area	corr. % max.	% of total
1	3.824	3	8	18	BV 2	8408	131072	25.07%	13.759%
2	3.909	18	24	33	PV	38178	522738	100.00%	54.875%
3	3.992	33	39	48	PV	3855	64624	12.36%	6.784%
4	4.085	48	56	67	VV	5522	102061	19.52%	10.714%
5	4.434	112	121	140	PV 2	5917	132102	25.27%	13.868%

Sum of corrected areas: 952598

Signal : EIC Ion 473.00 (472.70 to 473.70): 02201001.D\data.ms

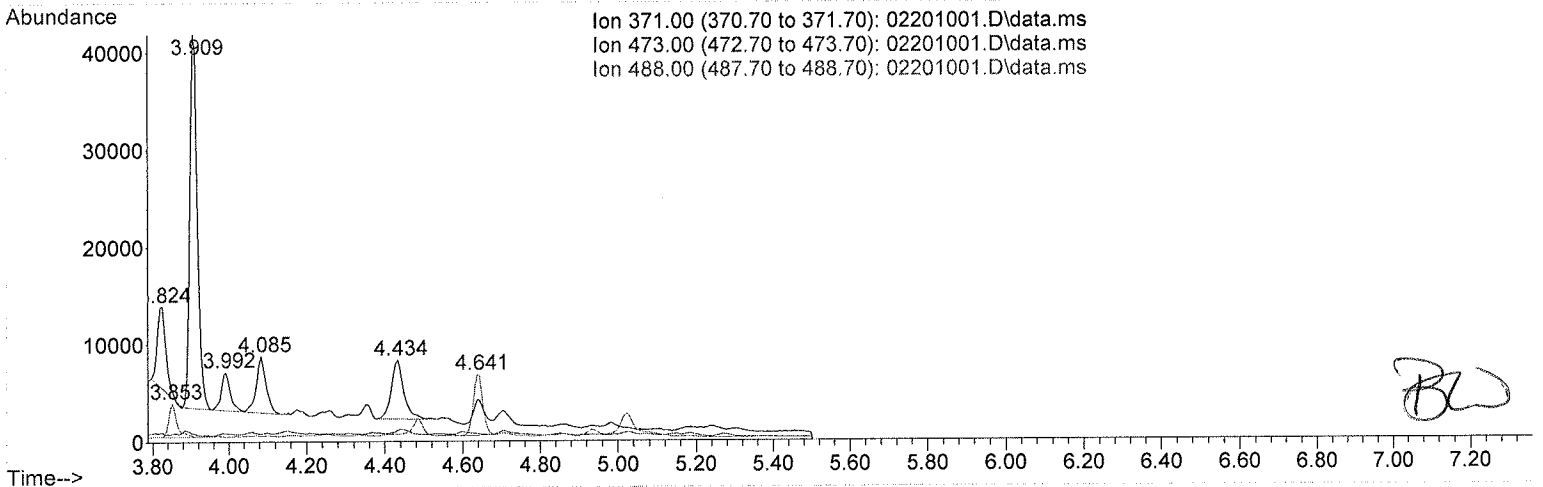
peak #	R.T. min	first scan	max scan	last scan	PK TY	peak height	corr. area	corr. % max.	% of total
No peaks were detected using the method integration parameters!									

Signal : EIC Ion 488.00 (487.70 to 488.70): 02201001.D\data.ms

peak #	R.T. min	first scan	max scan	last scan	PK TY	peak height	corr. area	corr. % max.	% of total
1	3.853	8	13	27	BB	3294	50973	49.35%	33.044%
2	4.641	151	160	168	BV	6246	103284	100.00%	66.956%

Sum of corrected areas: 154256

TOXI-A 10115.M Thu Mar 09 14:55:05 2017



Area Percent Report

Data Path : D:\DATA\2017\3-9-17-17 cTHC\  
 Data File : 02101002.D  
 Acq On : 09 Mar 2017 14:34  
 Operator : Instrument 65198 - Tox  
 Sample : positive control  
 Misc : FE03121501 in neg lot 12517; am 3  
 ALS Vial : 21 Sample Multiplier: 1

Integration Parameters: autoint1.e  
 Integrator: ChemStation

Method : D:\DATA\2016\852016a ta\psilocyn .D\TOXI-A 10115.M  
 Title :

Signal : EIC Ion 371.00 (370.70 to 371.70): 02101002.D\data.ms

peak #	R.T. min	first scan	max scan	last scan	PK TY	peak height	corr. area	corr. % max.	% of total
1	3.814	3	6	16	PH 2	13820	292312	8.86%	6.226%
2	3.899	16	22	30	VV	37037	544018	16.48%	11.588%
3	3.981	30	37	46	VV	5832	141707	4.29%	3.018%
4	4.074	46	54	64	VV	7378	179044	5.42%	3.814%
5	4.419	110	119	135	VV 2	8152	190064	5.76%	4.048%
6	4.630	151	158	162	VV	2728	47164	1.43%	1.005%
7	4.690	162	169	194	VV	194296	3300455	100.00%	70.301%

Sum of corrected areas: 4694765

Signal : EIC Ion 473.00 (472.70 to 473.70): 02101002.D\data.ms

peak #	R.T. min	first scan	max scan	last scan	PK TY	peak height	corr. area	corr. % max.	% of total
1	4.692	160	169	191	BV	90983	1536802	100.00%	100.000%

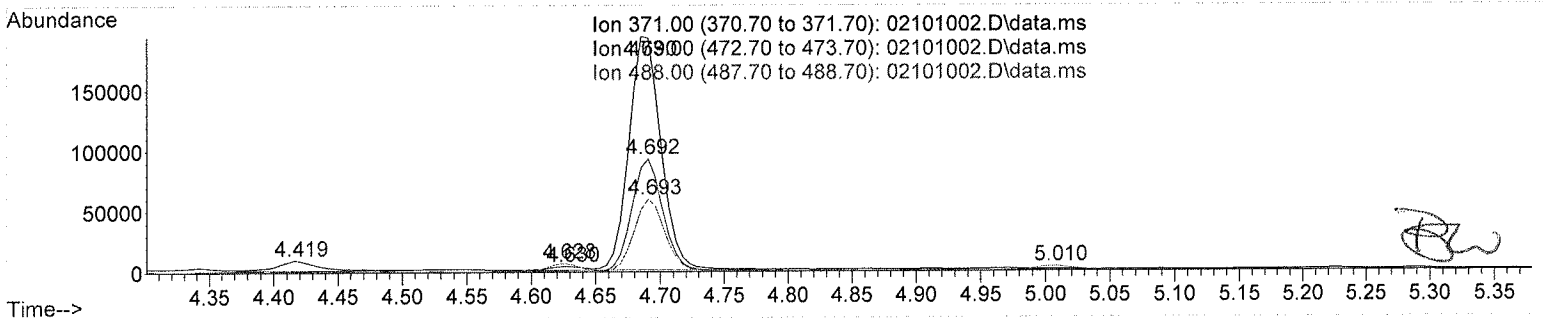
Sum of corrected areas: 1536802

Signal : EIC Ion 488.00 (487.70 to 488.70): 02101002.D\data.ms

peak #	R.T. min	first scan	max scan	last scan	PK TY	peak height	corr. area	corr. % max.	% of total
1	3.843	6	12	25	BV 2	3387	51441	5.24%	4.184%
2	4.628	146	157	163	BV	6364	109202	11.11%	8.882%
3	4.693	163	170	187	VB	58309	982509	100.00%	79.911%
4	5.010	219	228	253	VB 2	3179	86349	8.79%	7.023%

Sum of corrected areas: 1229501

TOXI-A 10115.M Thu Mar 09 14:54:51 2017



Area Percent Report

Data Path : D:\DATA\2017\3-9-17-17 cTHC\  
 Data File : 02101022.D  
 Acq On : 09 Mar 2017 17:41  
 Operator : Instrument 65198 - Tox  
 Sample : positive control  
 Misc : FE03121501 in neg lot 12517; am 3  
 ALS Vial : 21 Sample Multiplier: 1

Integration Parameters: autoint1.e  
 Integrator: ChemStation

Method : D:\DATA\2016\852016a ta\psilocyn .D\TOXI-A 10115.M  
 Title :

Signal : EIC Ion 371.00 (370.70 to 371.70): 02101022.D\data.ms

peak #	R.T. min	first scan	max scan	last scan	PK TY	peak height	corr. area	corr. % max.	% of total
1	3.812	3	6	16	BV 2	7894	82966	2.47%	1.823%
2	3.898	16	22	30	PV	55934	719124	21.43%	15.797%
3	3.981	30	37	45	PV	4514	73471	2.19%	1.614%
4	4.072	45	54	65	VV	6503	115312	3.44%	2.533%
5	4.417	109	118	133	PV	8291	152083	4.53%	3.341%
6	4.627	150	157	161	PV	3047	52792	1.57%	1.160%
7	4.688	161	169	192	VV	206038	<u>3356432</u>	100.00%	73.732%

Sum of corrected areas: 4552180

Signal : EIC Ion 473.00 (472.70 to 473.70): 02101022.D\data.ms

peak #	R.T. min	first scan	max scan	last scan	PK TY	peak height	corr. area	corr. % max.	% of total
1	4.690	160	169	189	VV	96731	<u>1565122</u>	100.00%	100.000%

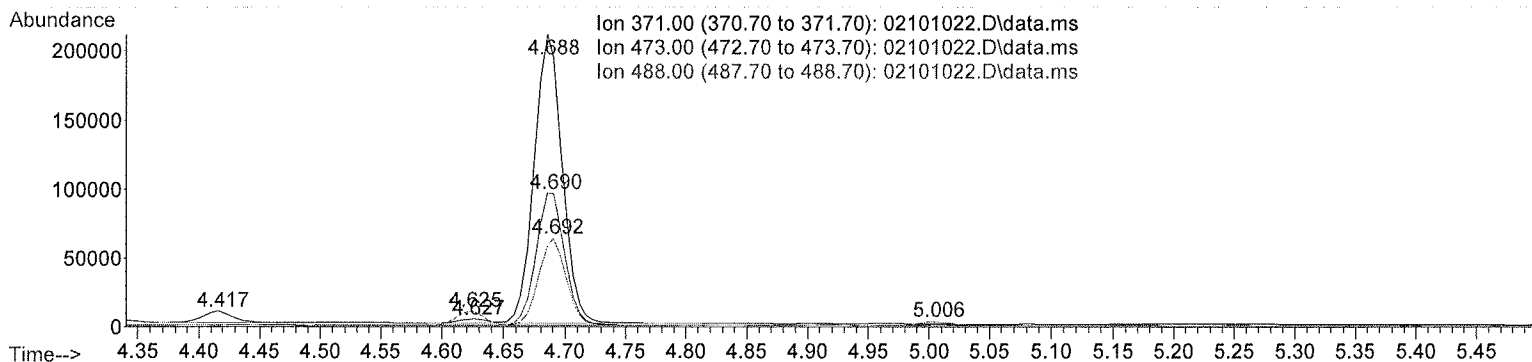
Sum of corrected areas: 1565122

Signal : EIC Ion 488.00 (487.70 to 488.70): 02101022.D\data.ms

peak #	R.T. min	first scan	max scan	last scan	PK TY	peak height	corr. area	corr. % max.	% of total
1	3.842	6	11	24	BB	3619	51568	5.18%	3.992%
2	4.625	144	157	162	BV	10287	167456	16.84%	12.963%
3	4.692	162	169	185	VB	62161	<u>994661</u>	100.00%	76.998%
4	5.006	217	228	249	VB 2	3098	78124	7.85%	6.048%

Sum of corrected areas: 1291809

TOXI-A 10115.M Thu Mar 09 19:48:20 2017



## 2.4.4 Carboxy-THC QC Calculations

Run Date: 3/9/2017

Case Calculations:

Lab Case #: brc3- 68430

EIC Ion 371 Corr. Area:	<u>906768</u>	473:371 Ratio:	<u>0.478</u>
EIC Ion 473 Corr. Area:	<u>433371</u>	488:371 Ratio:	<u>0.293</u>
EIC Ion 488 Corr. Area:	<u>265892</u>		

Quality Control Calculations:

Retention Time acceptable range: 4.590 to 4.788

	<i>1st ctrl</i>	<i>2nd ctrl</i>
EIC Ion 371 Corr. Area:	<u>3300455</u>	<u>3356432</u>
EIC Ion 473 Corr. Area:	<u>1536802</u>	<u>1565122</u>
EIC Ion 488 Corr. Area:	<u>982509</u>	<u>994661</u>

Approximate minimum corrected area of 371 ion: ~ **660091**

		Ratio of 473:371			
<i>1st ctrl</i>	<u>0.466</u>	<i>2nd ctrl</i>	<u>0.466</u>	avg.	<b>0.466</b>

Accepted Range  
(+/- 20%) 0.373 - 0.559

		Ratio of 488:371			
<i>1st ctrl</i>	<u>0.298</u>	<i>2nd ctrl</i>	<u>0.296</u>	avg.	<b>0.297</b>

Accepted Range  
(+/- 20%) 0.238 - 0.356

Carboxy-calculation sheet  
Revision 0 effective date 10/23/13  
Issuing authority: Quality Manager